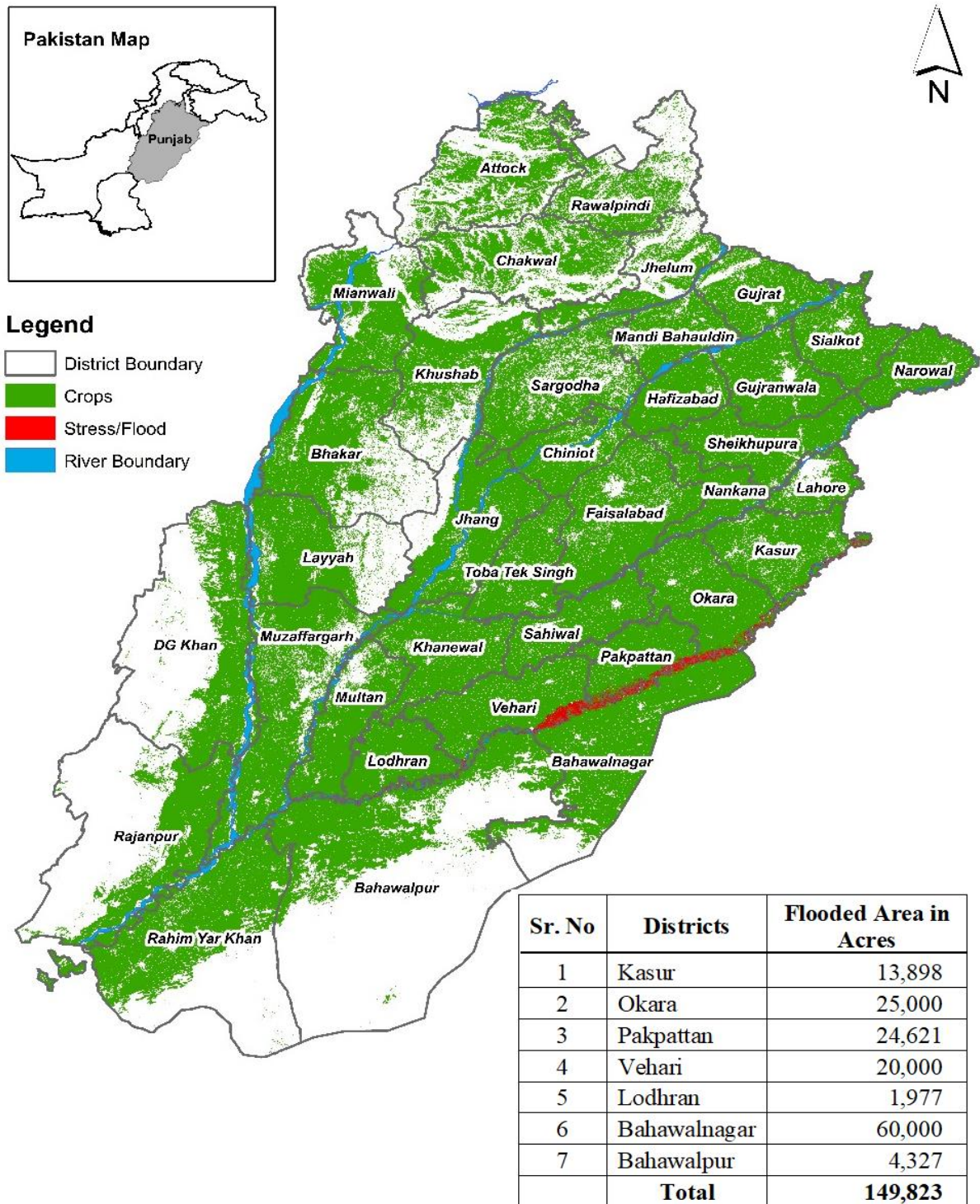




Flood Affected Area by River Satluj in Punjab (1st Week September, 2023)



Sentinel-2 satellite imageries were used: This system captures high-resolution Earth images and uses NDVI to assess vegetation health, monitor growth, detect crop stress, and manage land resources efficiently through visible and near-infrared light measurements. The most affected crop area (under mild to severe stress) is around 60,000 acres.

Note: Blue-shaded area, other than river/canal belts, is under stagnant rainfall water.

